



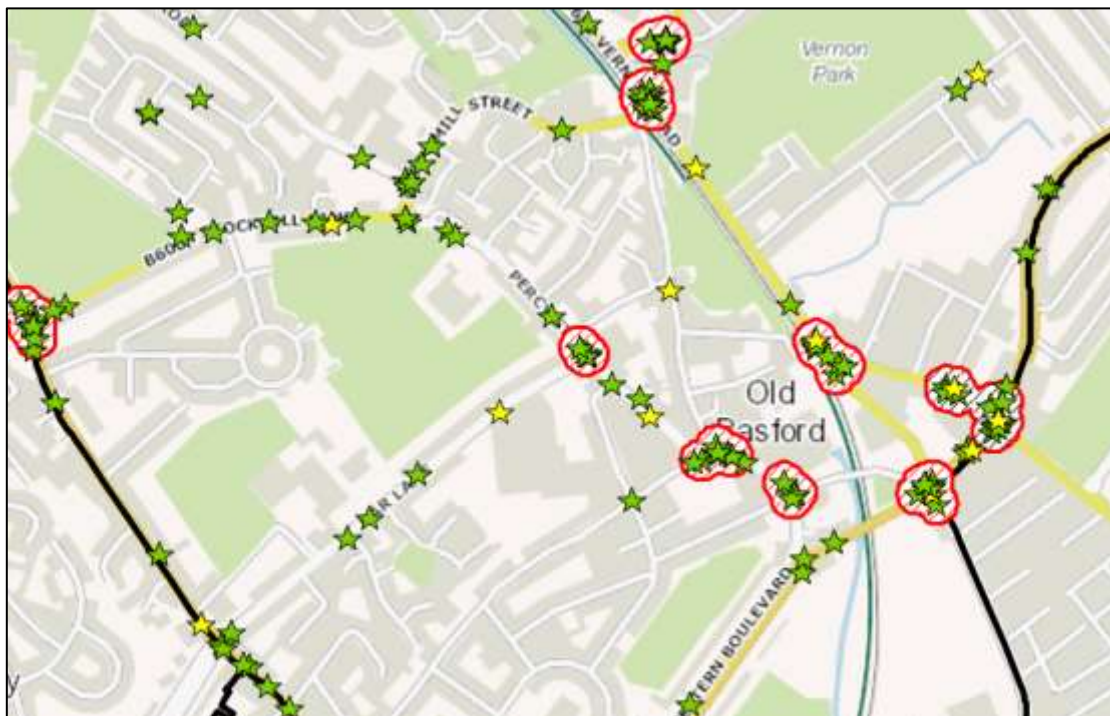
Road Safety Ward Report: Basford

2016 report

Author: Chris Berry, Technical Officer, Road Safety

Issue: v1

Date: 24/11/2016



Road.Safety@Nottinghamcity.gov.uk

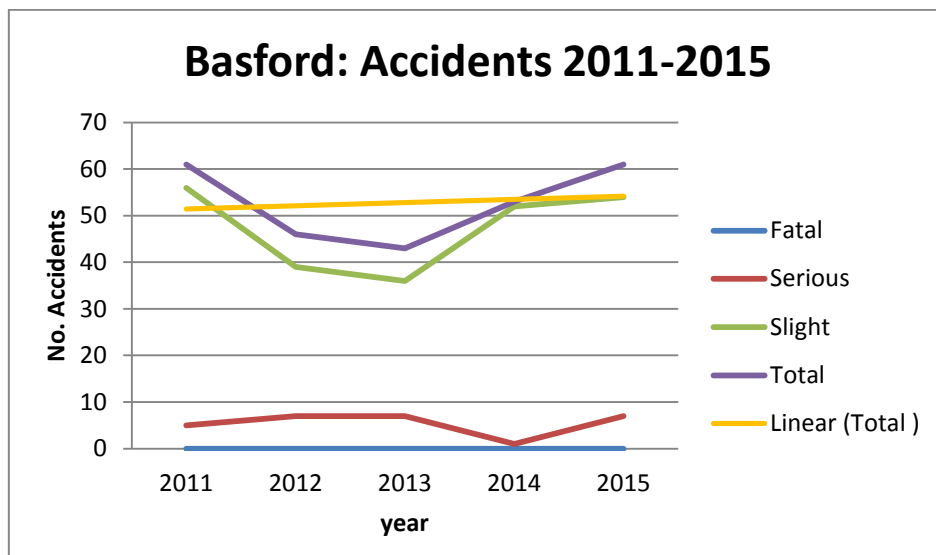
Traffic and Safety | Development | Loxley House Station
Street | Nottingham | NG2 3NG

Road Safety Report 2016: Basford Ward

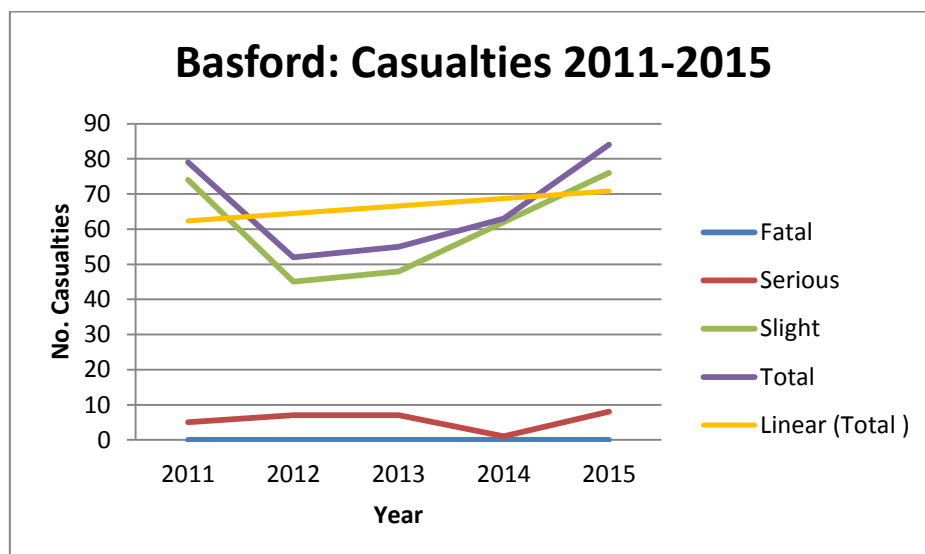
In order to attempt to reduce the number and severity of accidents across Nottingham it was decided last year to review the trends on a ward by ward basis to try and tackle some of the specific problem sites within each area, with support from the local Ward Councillors. This report therefore details the accident trends within the **Basford Ward** over the last five calendar years, to the end of 2015.

Unfortunately, after a highly successful period of reducing accidents and the resulting number of casualties across Nottingham, the last three years have seen accident numbers increase across the city with a sharp increase in Killed and Seriously Injured (KSI) accidents in 2015. This increase has mirrored the time over which we have seen casualty reduction scheme funding significantly reduced.

In the Basford Ward there was a dip in accidents in 2012 and 2013. However in 2015 accident numbers returned to above the 2011 figure. The trend over the most recent complete five years shows that accident numbers are increasing as shown below:



Similarly the number of casualties resulting from these accidents has increased as shown below:



Data Led Problem Identification.

Appendix A provides a plot of the accidents and casualties within the **Basford Ward** and along the Ward boundaries. It is important to note that the plot highlights only those locations where there have been clusters of four or more accidents within the five year period. This is shown with a red circle to identify the location. It does not specifically highlight lengths of road or areas over which high numbers of accidents may be spread, which would require more detailed analysis to identify, although all accidents are plotted to indicate this.

A summary table with details of the accident and casualty trends in your area along with some initial analysis to identify the age groups of casualties, types of vehicles involved in these accidents and more details about each cluster is included in **Appendix B**.

Problem Areas.

The cluster plot shows that there are **fourteen** individual locations where there are groups of four or more accidents within a 20m radius in the last five years. The top ranking sites are as follows:

B682 Nottingham Road at the junction with Western Boulevard: 15 accidents / 21 casualties

- This cluster spreads west to include the junction with Scotland Road.
- 3 casualties sustained serious injuries.
- At this site there has been 1 accident involving a pedestrian, 6 accidents involving pedal cycles, 1 involving a child and 1 involving a powered two-wheeler.

B6004 Southwark Street/David Lane at the junction with the B682 Vernon: 14 accidents / 23 casualties

- 1 casualty sustained serious injuries.
- At this site there has been 1 accident involving a pedestrian, 4 accidents involving pedal cycles, 5 involving a child and 2 involving a powered two-wheeler.

B6004 Stockhill Lane at the junction with the A610 Nuthall Road: 12 accidents / 13 casualties

- 1 casualty sustained serious injuries.
- At this site there have been 2 accidents involving a pedestrian, 2 accidents involving pedal cycles, 2 involving a child and 2 involving a powered two-wheeler.

A611 Hucknall Road at the junction with Arnold Road: 11 accidents / 13 casualties

- At this site there have been 4 accidents involving a pedestrian, 1 accident involving pedal cycles and 1 involving a child.

B682 Vernon Road at the junction with Nottingham Road (mini roundabout): 12 accidents / 13 casualties

- 1 casualty sustained serious injuries.
- At this site there have been 2 accidents involving a pedestrian and 2 involving a child.

As would be expected the clusters are all on the main roads across the Ward with accidents regularly spread along these lengths between the major junctions. The plot included in **Appendix A** however also shows that there are other accidents along the lengths of **Percy Street** and **Arnold Road** that may warrant further investigation.

Other potential issues.

As shown, most of the accidents across the Ward are centred on the main routes through the area. It is also worth noting the types of casualty shown within the Ward, highlighted below:

Total casualties within the Ward (2011-2015): 333 (from 263 accidents)

- Pedestrian casualties: 51 (15.5%) including 7 serious injuries.
- Pedal cyclist casualties: 48 (14.5%) including 8 serious injuries.
- Powered two-wheelers (motorcycles/mopeds): 26 (8%) including 4 serious injuries.
- The remaining casualties were drivers or passengers within motor vehicles.
- In total across the Ward 45 casualties (13.5%) were aged 16 years of age or under including 7 who sustained serious injuries.

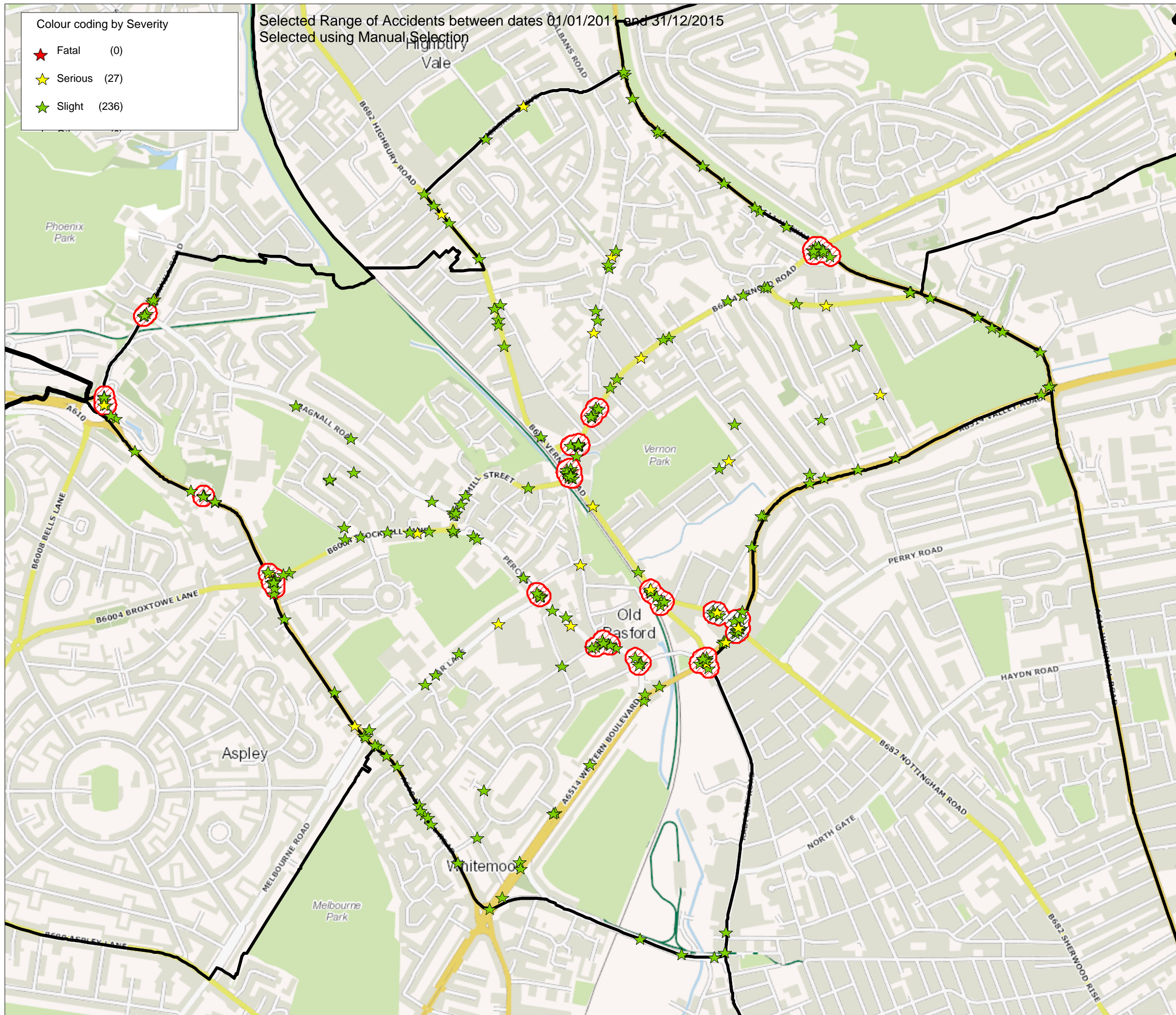
Further investigation of these user groups may identify sites, routes or areas where there are disproportionately high numbers of one user group – for example pedestrians, cyclists or children, who are injured as a result of road traffic accidents. This could help to focus resources on resolving specific issues encountered by that group.

What can be done next?

If you are interested in investigating some of these sites, lengths or areas in more depth feasibility studies or investigations can be requested through the Area Focus and Road Safety Teams. These studies can identify trends and potential causes of the accident clusters or accidents along a route and may identify potential casualty reduction schemes that can be carried out.

The cost of these studies will vary depending on the area to be considered and number of accidents. A quote can be provided for this initial work should you wish to explore potential treatments at the accident clusters in your area.

Please contact Chris Berry in the Road Safety Team (chris.berry@nottinghamcity.gov.uk / 0115 878 65257) to discuss any of the data provided in this report. Alternatively please contact Ged Newton or Martin Bee in the Area Focus Team (Area.Focus@nottinghamcity.gov.uk) should you want to issue a works package to carry out further analysis of the problems in the Basford Ward.



This map is reproduced from Ordnance Survey material with the permission of Ordnance Survey on behalf of the Controller of Her Majesty's Stationery Office + Crown Copyright. Unauthorised reproduction infringes Crown copyright and may lead to prosecution or civil proceedings.
 Nottingham City Council
 Licence No: 2016

Her Majesty's Office (c) Crown Copyright. Unauthorised reproduction infringes Crown Copyright and may lead to prosecution or civil proceedings.



DRAWING TITLE
 Appendix A: Basford Ward
 Accident Plot

SCALE 1 : 11172

DATE 23/11/2016

DRAWING No.

DRAWN BY

Accidents between dates 01/01/2011 and 31/12/2015 (60) months
 Selection: Notes:
 Selected using Manual Selection Basford Ward

Table 1 - Accidents by Month

	2011	2012	2013	2014	2015	Total
January	5	2	4	3	3	17
February	1	3	1	2	1	8
March	5	3	2	6	4	20
April	3	4	1	4	5	17
May	10	5	3	9	7	34
June	6	3	6	1	5	21
July	6	3	6	2	4	21
August	2	6	5	4	5	22
September	3	6	6	5	7	27
October	8	2	2	4	3	19
November	5	3	1	10	12	31
December	7	6	5	3	5	26
TOTAL	61	46	42	53	61	263

Table 2 - Casualties by Month

	2011	2012	2013	2014	2015	Total
January	5	2	4	3	3	17
February	1	3	1	3	1	9
March	6	3	3	6	4	22
April	5	4	1	4	6	20
May	13	6	4	14	10	47
June	6	3	10	1	5	25
July	8	3	6	2	8	27
August	3	6	5	4	9	27
September	6	9	8	5	14	42
October	11	3	2	4	3	23
November	6	4	1	12	13	36
December	9	7	9	5	8	38
TOTAL	79	53	54	63	84	333

Table 3 - All Accidents by Severity

	2011	2012	2013	2014	2015	Total
Fatal	0	0	0	0	0	0
Serious	5	7	7	1	7	27
Slight	56	39	35	52	54	236
TOTAL	61	46	42	53	61	263

Table 4 - Casualties by Severity

	2011	2012	2013	2014	2015	Total
Fatal	0	0	0	0	0	0
Serious	5	7	7	1	8	28
Slight	74	46	47	62	76	305
TOTAL	79	53	54	63	84	333

Accidents between dates 01/01/2011 and 31/12/2015 (60) months

Selection:

Selected using Manual Selection

Notes:

Basford Ward

DEFAULT VEHICLE GROUPS

Accidents involving:	Fatal	Serious	Slight	Total	Casualties:	Fatal	Serious	Slight	Total
Motor Vehicles Only	0	15	172	187	Vehicle Driver	0	4	119	123
2-wheeled motor vehicles	0	4	25	29	Vehicle Passenger	0	5	80	85
Pedal Cycles	0	8	40	48	Motorcycle rider	0	4	22	26
Horses & Other	0	0	1	1	Cyclist	0	8	40	48
					Pedestrians	0	7	44	51
Total Accidents	0	27	236	263	Other	0	0	0	0
					<hr/>				
					Total	0	28	305	333

Accidents between dates 01/01/2011 and 31/12/2015 (60) months

Selection:
4 total accidents within a radius of 30 metres
(Overlapping clusters have been merged)
Ranked by Total Accidents
Selected using Manual Selection

Notes:
Basford Ward Cluster Report

Cluster ID	Rank	Location	Node No.	Grid Reference		Severity Ratio	Accidents						Casualties						Accidents involving				
				Easting	Northing		Fa	Se	SI	Tot.	p.a.	KSI	Fa	Se	SI	Tot.	p.a.	KSI	Peds	Cyes	Child	OAPs	P2W
1	1	B682 NOTTINGHAM ROAD, at its Junction with Unclassified Road MAZDA CAR SHOWROOM PTE ENT (OPP SCOTLAND RD), NOTTINGHAM		455527	342915	0.200	0	3	12	15	3.0	3	0	3	18	21	4	3	1	6	1	1	1
2	2	B6004 SOUTHWARK STREET, at its Junction with B682 VERNON ROAD, NOTTINGHAM		455044	343372	0.071	0	1	13	14	2.8	1	0	1	22	23	5	1	1	4	5	1	2
3	3	B6004 STOCKHILL LANE, at its Junction with A610 NUTHALL ROAD, NOTTINGHAM		454131	343042	0.083	0	1	11	12	2.4	1	0	1	12	13	3	1	2	2	2	0	2
4	4	A611 HUCKNALL RD, at its XRDS Junction with B6004 ARNOLD RD, NOTTINGHAM		455818	344053	0.000	0	0	11	11	2.2	0	0	0	13	13	3	0	4	2	1	1	0
5	5	B682 VERNON ROAD, ZEBRA 23 metres northwest of / NOTTINGHAM RD MINI RBT, OLD BASFORD		455312	342991	0.111	0	1	8	9	1.8	1	0	1	10	11	2	1	2	0	2	0	1
6	5	Unclassified Road RADFORD ROAD, 5 metres southeast of A6514 VALLEY ROAD, NEW BASFORD		455457	342791	0.222	0	2	7	9	1.8	2	0	2	13	15	3	2	0	3	1	0	1

Accidents between dates 01/01/2011 and 31/12/2015 (60) months

Selection:
4 total accidents within a radius of 30 metres
(Overlapping clusters have been merged)
Ranked by Total Accidents
Selected using Manual Selection

Notes:
Basford Ward Cluster Report

Cluster ID	Rank	Location	Node No.	Grid Reference		Severity Ratio	Accidents						Casualties						Accidents involving				
				Easting	Northing		Fa	Se	SI	Tot.	p.a.	KSI	Fa	Se	SI	Tot.	p.a.	KSI	Peds	Cyes	Child	OAPs	P2W
7	7	C134 CHURCH STREET-BAILEY ST ADJ PTE ENT FACTORY (APPROX 30M SE /CHURCH ST), BASFORD		455146	342849	0.000	0	0	8	8	1.6	0	0	0	8	8	2	0	0	1	2	0	0
8	7	B6004 SOUTHWARK STREET, at its Junction with B6004 UN-NAMED ACCESS RD TO VERNON RD, NOTTINGHAM		455062	343458	0.000	0	0	8	8	1.6	0	0	0	8	8	2	0	3	1	0	1	3
9	9	B6004 SOUTHWARK STREET-ARNOLD ROAD, at its Junction with Unclassified Road PARK LANE, NOTTINGHAM		455122	343558	0.167	0	1	5	6	1.2	1	0	1	5	6	1	1	1	0	1	0	2
10	10	A610 NUTHALL RD BYPASS - NUTHALL RD, at its Junction with Unclassified Road CINDERHILL RD /B6008 BELLS LN RBT (AKA CINDERHILL RBT), NOTTINGHAM		453620	343595	0.200	0	1	4	5	1.0	1	0	1	6	7	1	1	0	1	1	0	1
11	10	Percy St /Bar Ln Basford		454950	343000	0.200	0	1	4	5	1.0	1	0	1	6	7	1	1	2	0	1	0	0
12	12	C134 CHURCH STREET, at its Junction with C134 CHURCH STREET / BAILEY ST / WESTERN BLVD, NOTTINGHAM		455254	342794	0.000	0	0	4	4	0.8	0	0	0	4	4	1	0	0	1	0	0	2

Accidents between dates 01/01/2011 and 31/12/2015 (60) months

Selection:
4 total accidents within a radius of 30 metres
(Overlapping clusters have been merged)
Ranked by Total Accidents
Selected using Manual Selection

Notes:
Basford Ward Cluster Report

Cluster ID	Rank	Location	Node No.	Grid Reference		Severity Ratio	Accidents				Casualties				Accidents involving								
				Easting	Northing		Fa	Se	SI	Tot.	p.a.	KSI	Fa	Se	SI	Tot.	p.a.	KSI	Peds	Cyces	Child	OAPs	P2W
13	12	A610 NUTHALL ROAD PXING O/S TESCO EXPRESS, (202 metres northwest of KELSTERN CLOSE), CINDERHILL		453921	343302	0.000	0	0	4	4	0.8	0	0	0	5	5	1	0	2	0	0	0	0
14	12	Unclassified Road CINDERHILL ROAD, at its Junction with C133 BAGNALL ROAD, NOTTINGHAM		453744	343859	0.000	0	0	4	4	0.8	0	0	0	5	5	1	0	1	1	1	0	0